

PRESCHOOL 2024-2025

5

We have designed a balanced preschool program ready to meet the educational, social, emotional, motor, and creative needs of children 3 to 5 years. Preschool children will be introduced to letters, numbers, colors, shapes, and other basic concepts. Pre-Kindergarten children will be introduced to phonics, pre-writing skills, fine motor skills, reading readiness, and number concepts. Story-time, music activities, and seasonal art projects will be included in the program. **Children must be 3 years old by September 1, 2024. All children must be able to take care of their own bathroom needs.**

Registration Information

Registration is accepted at the Cynthia Neal Center, 8047 W. 91st Place.

The office is open Monday thru Friday, 9:00 a.m. - 5:00 p.m.

You must bring your child's birth certificate and immunization records with you at the time of registration. A note from your doctor stating that your child is up-to-date on his/her shots is also acceptable. There is a \$100 non-refundable/non-transferable deposit required when you register. *Non-residents must add \$15 to this fee. The \$15 non-resident fee is due with the August 1, 2024 payment. The payment plan is suggested. **YOU MUST PAY BY EACH DEADLINE OR A LATE FEE OF \$10.00 WILL BE ADDED TO YOUR PAYMENT.** Of course, you may pay your balance in full at any time.

Preschool Tuition & Payment Schedule for Full School Year

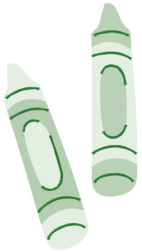
Class times are 8:45 a.m. to 11:45 a.m. or 12:15 p.m. to 3:15 p.m.

M-F (5 days), M/W/F (3 days), or T/TH (2 days).

Full Year Option - 716715	M - F	M/W/F	T/TH
Deposit due at time of registration	\$100.00	\$100.00	\$100.00
Amount due by August 1, 2024	\$660.00*	\$362.00*	\$284.00*
Amount due by September 3, 2024	\$660.00	\$362.00	\$284.00
Amount due by October 1, 2024	\$660.00	\$360.00	\$282.00
TOTAL FEE FOR SCHOOL YEAR:	\$2080.00	\$1184.00	\$950.00

Half Year Option - 716714 - Now you are able to register for only half a year at a time. Students who are enrolled in the January - May option will be included in the farewell program at the end of the year.

Half Year Option September-December	M - F	M/W/F	T/TH
Fees due at time of registration	\$1091R/\$1133NR	\$655R/\$665NR	\$527R/\$537NR
Half Year Option January-May	M - F	M/W/F	T/TH
Fees due at time of registration	\$1118R/\$1128NR	\$655R/\$665NR	\$558R/\$568NR



Lunch Bunch

For the children enrolled in our preschool program, we are now offering a Lunch Bunch class extension. Lunch bunch is ideal for preschoolers who are ready to extend their day either before or after school, and is designed to give your child an opportunity to build on their social learning, develop self help skills, and build relationships with new friends. Each child is required to bring a brown bag lunch - lunch is not provided. **NOTE: Please do not pack any type of peanut or peanut product in your child's lunch. If you are sending your child with a sandwich containing almond butter or like product, please label it clearly so teachers know what it consists of. For more details, call 708-598-1233.**

Time: 11:45 a.m. - 12:15 p.m.
Ages: 3 - 5 Years
Location: Cynthia Neal Center Preschool
Min/Max: 6/10
Fees: Monthly fees below

Month:	2 Day	3 Day	5 Day
Aug	\$18R/\$23NR	\$22R/\$27NR	\$40R/\$45NR
Sept.	\$36R/\$41NR	\$54R/\$59NR	\$90R/\$95NR
Oct.	\$45R/\$50NR	\$63R/\$68NR	\$108R/\$113NR
Nov.	\$31R/\$36NR	\$45R/\$50NR	\$72R/\$77NR
Dec.	\$27R/\$32NR	\$40R/\$50NR	\$67R/\$72NR
Jan.	\$36R/\$41NR	\$45R/\$50NR	\$81R/\$86NR
Feb.	\$36R/\$41NR	\$49R/\$54NR	\$86R/\$91NR

Kindergarten Kid's Place

Is your child enrolled in half-day preschool or kindergarten, and you need somewhere for them to go the rest of the day? You can sign them up for our before or after care program. Similar to the after school program, this program will only be held on full days of school (District 117). While the children are here they will work on their school work, play a variety of games, make craft projects, or play sports. Parents must contact District 117 for transportation price and arrangements before registering at the Park District. Each child must provide their own lunch. A light snack and refreshments may be served. Any child picked up after 4:25 p.m. will be assessed a late fee (no exceptions). **NOTE: No refunds, credits, or transfers. For more details, call 708-598-1233. No after care on school scheduled days off. On team days, hours will be extended to accommodate you. Fees due by Thursday at 5:00 p.m. the week before or late fees apply.**

Before Care: 716711
Time: 8:45 a.m. - 12:30 p.m.
Fee: \$86 Resident, \$91 Non-Resident (per week)

After Care: 716712
Time: 11:30 a.m. - 4:15 p.m.
Fee: \$107 Resident, \$112 Non-Resident (per week)

Location: Cynthia Neal Center Preschool Room
Min/Max: 6/10